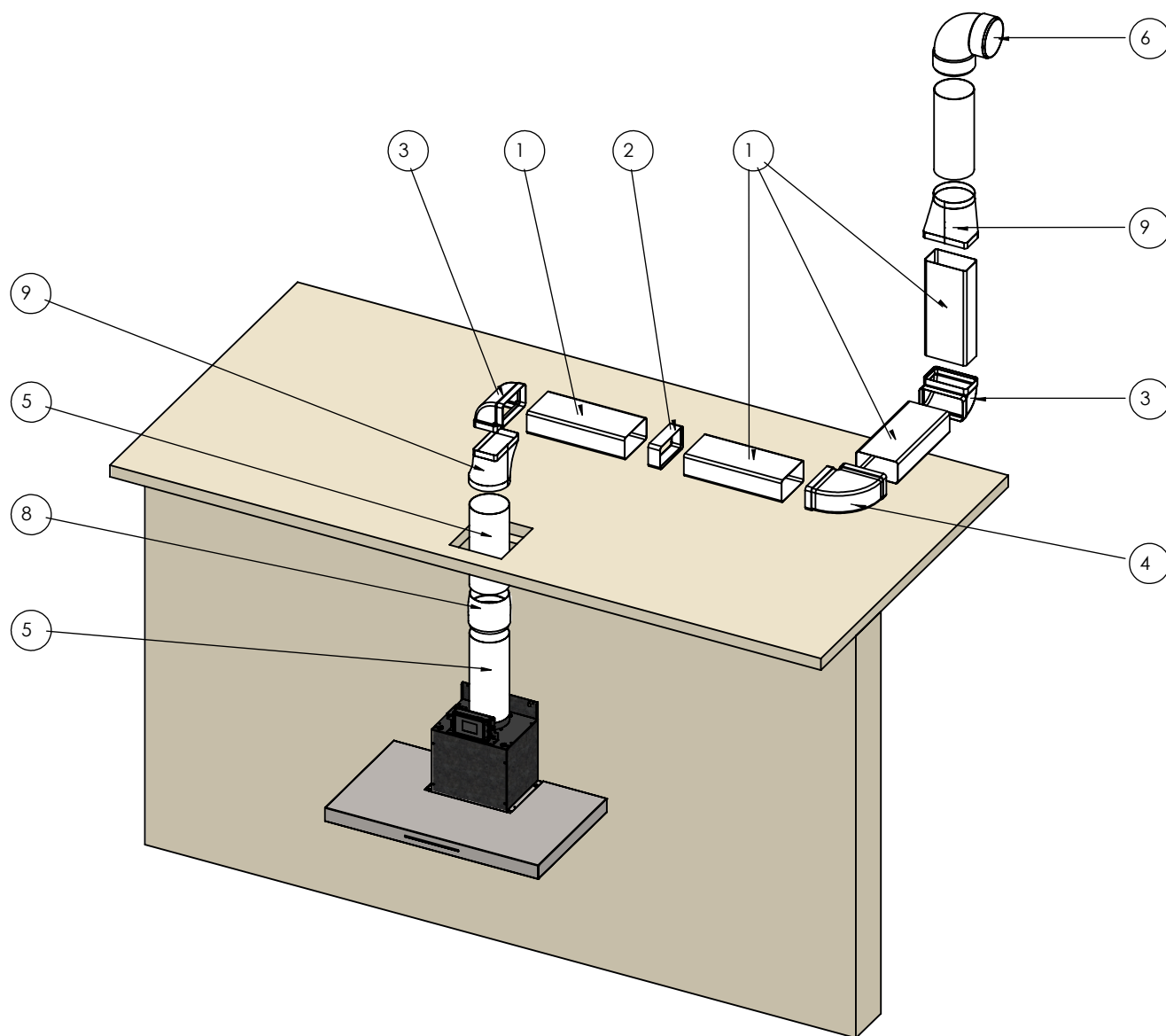


ACCESORIOS PARA INSTALACIÓN DE CAMPANAS ACCESSORIES FOR PROPER COOKER HOODS INSTALLATION

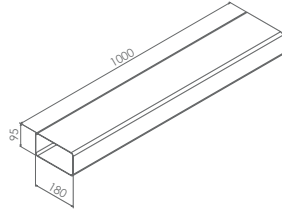


Rectangular / Rectangular 180x90

1

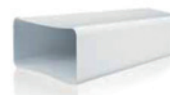


Tubo rectangular
Rectangular duct
180 x 90 mm L= 1000 mm

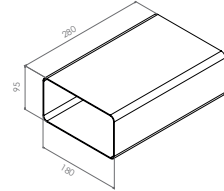


Ref.

009809



Conducto rectangular
Rectangular duct
180 x 90 mm L= 280 mm



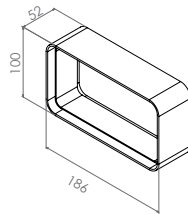
Ref.

640064500088

2



Empalme rectangular
Straight connector
180 x 90 mm



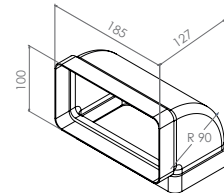
Ref.

010437

3



Codo rectangular vertical 90° *
Vertical bend 90°
180 x 90 mm



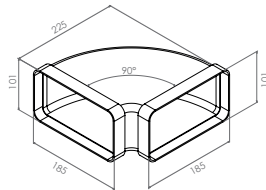
Ref.

010438

4



Codo rectangular horizontal 90° *
Straight bend 90°
180 x 90 mm



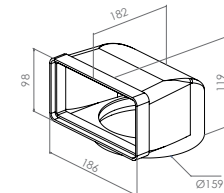
Ref.

010439

7



Codo vertical redondo
a rectangular. Curva 180x90 mm
Mixed 180x90mm
Ø150 mm



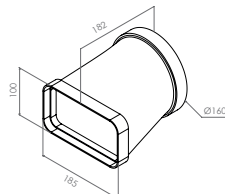
Ref.

010440

9



Convertidor Ø150
Connector
90x180

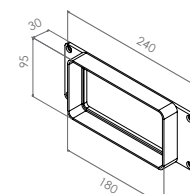


Ref.

009310

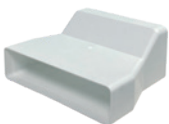


Soporte
90x220 (marco)
90x180 (salida)

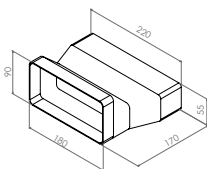


Ref.

640064500070



Adaptador
220x55 / 180x90



Ref.

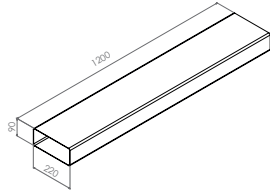
010104

Rectangular / Rectangular 220x90

1



Tubo rectangular
Rectangular duct
220 x 90 mm L= 1200 mm



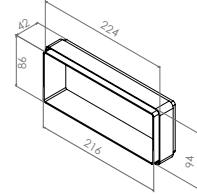
Ref.

009813

2



Empalme rectangular
Straight connector
220 x 90 mm



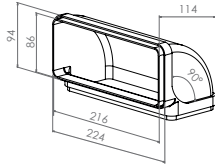
Ref.

009814

3



Codo rectangular vertical 90°
Vertical bend 90°
220 x 90 mm



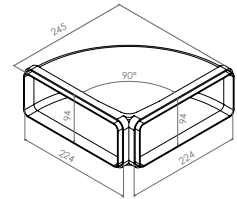
Ref.

009815

4



Codo rectangular horizontal 90°
Straight bend 90°
220 x 90 mm

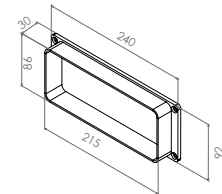


Ref.

010441



Soporte
90x220
Marco salida



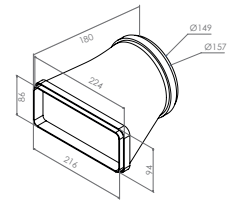
Ref.

640064500081

9



Convertidor recto Ø150 mm / 220 x 90 mm
Mixed straight connector



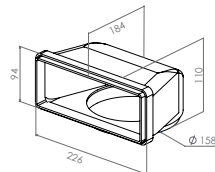
Ref.

009905

7

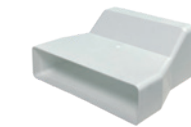


Codo redondo a rectangular
Ø150 90x220 90°
convertidor

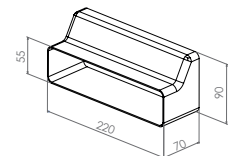


Ref.

640064500079



Adaptador
220x55 / 220x90



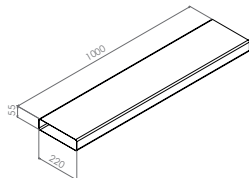
Ref.

640064500121

Rectangular / Rectangular 220x55



Tubo rectangular
Rectangular duct
220 x 55 mm L: 1000 mm

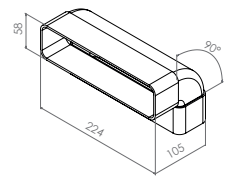


Ref.

010100



Codo rectangular vertical 90°
Vertical bend 90°
220 x 55 mm

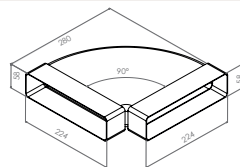


Ref.

640064500111



Codo rectangular horizontal 90°
Horizontal bend 90°
220 x 55 mm

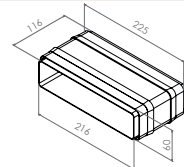


Ref.

010101



Empalme rectangular
Straight connector
220 x 55 mm



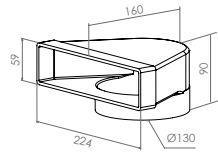
Ref.

010442

Rectangular / Rectangular 220x55 (cont.)



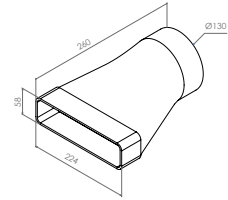
Codo vertical redondo a rectangular
220x55 / Ø125 / 90°



Ref.
640064500116



Empalme
220x55 / Ø125



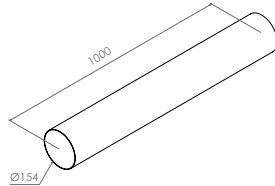
Ref.
010102

Circular / Circular Ø150

5



Tubo redondo
Circular Duct
Ø150 mm L= 1000 mm

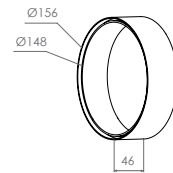


Ref.
009817

8



Empalme redondo
Ø150

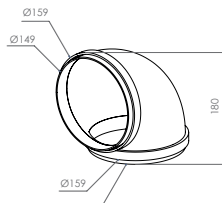


Ref.
009601

6



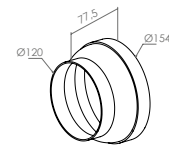
Codo redondo
Ø150



Ref.
009308



Aro reductor
Reducer ring
Ø150 a Ø120 mm

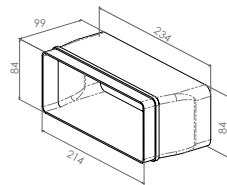


Ref.
640064500012

Rectangular / Rectangular 230x80



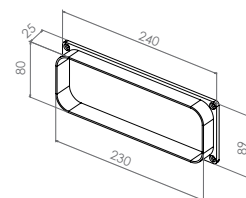
Convertidor
80x230
90x220



Ref.
640064500080



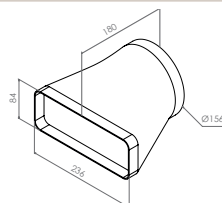
Ajuste aro
80x230
salida



Ref.
640064500033



Convertidor
80x230
Ø150



Ref.
640064500053

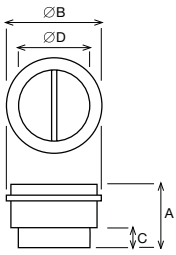
VÁLVULAS ANTI-RETORNO, VENTANILLAS Y REJILLAS BACKDRAFT SHUTTERS, WINDOWS AND VENTS



Válvulas de cierre anti-retorno Backdraft shutters

Características: Compuerta antiretorno metálica para instalar en la descarga de los ventiladores. Impiden la entrada de olores, corrientes de aire y evitan fugas de calefacción cuando el extractor no funciona.

Features: metal backdraft shutters to install at the exit delivery. Prevents from the entry of odours, air streams and heating leaks from the outside when the extractor is not on.



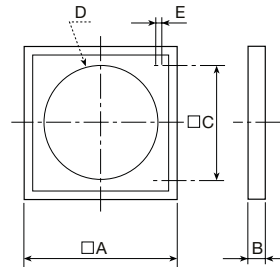
	A	Ø B	C	Ø D	Ref.
Ø 125 mm	107	139	31,5	119,5	006723
Ø 150 mm	121	163,5	35	147	006724
Ø 160 mm	121	173,5	35	157	006725
Ø 200 mm	131,5	214	35	197,5	006726



Ventanillas de apertura por sobrepresión Wall outlet with gravity flat

Características: Persiana de sobrepresión construida en material termoplástico, estabilizado contra los rayos UV. Resistencia a los flujos abrasivos.

Features: Overpressure blind manufactured in thermoplastic material, stabilized against UV rays. Resistance to abrasive flows.



	Ø A	B	C	Ø D	Ø E	Ref.
Ø 130 mm	158	15	110	130	4	006711
Ø 152 mm	178	20	130	152	4	006712
Ø 205 mm	243	21	184	205	5	006713

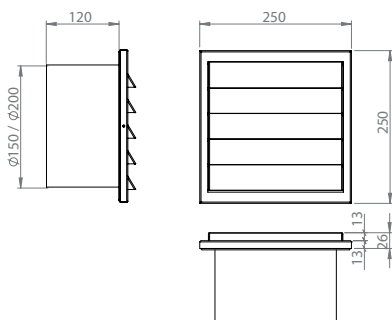


Rejillas exteriores INOX.
Outdoor grills in S/Steel with backdraft shutter

	Ref.
Ø 150 mm	008769
Ø 200 mm	008770

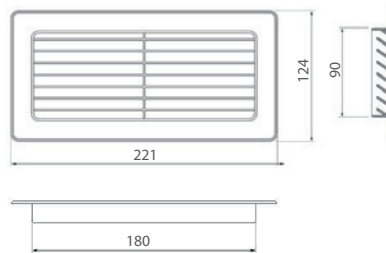
Características: Realizada en INOX, tiene una doble función: impide la entrada de corrientes de aire, y por otra parte, su rejilla exterior protege de la entrada de cuerpos extraños dentro del conducto.

Features: Made of stainless steel, with a dual function: prevents the entry of air streams, while its outside grill protects from the entry of foreign objects inside the duct.



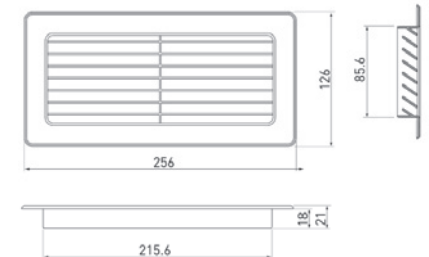
Rejilla final tubo rectangular PVC
PVC ventilation grill for rectangular ducting

	Ref.
180 x 90 mm	009850



Rejilla final tubo rectangular PVC
PVC ventilation grill for rectangular ducting

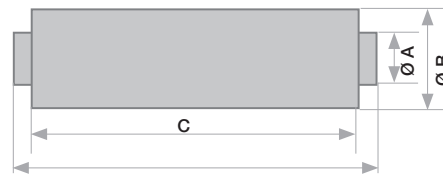
	Ref.
180 x 90 mm	009850



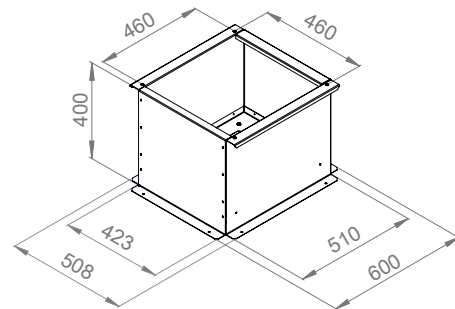
Tubo silenciador para conducto
Silencer tube for pipe



Descripción / Description	mm				Ref.
	Ø A	Ø B	C	D	
Ø 160 mm	160	250	600	700	009952
Ø 200 mm	200	300	600	700	009953



Caja soporte insonorizada para motores de tejado
Soundproof support box for roof motors



Ref.

008624

Características: Fabricada en acero galvanizado, interior del plenum con sistema de insonorización S.E.C. System by Pando, ideal para reducir la pérdida de caudal y disminuir el nivel sonoro. Aconsejable para instalaciones de conducto que tengan un recorrido de campana a motor inferior a 4 m.

Features: Manufactured in galvanized steel, plenum interior has S.E.C. soundproof system System by Pando, ideal to reduce the loss of flow and to reduce the noise level. Recommended for piping installations with a distance of less than 4 m from hood to motor.